

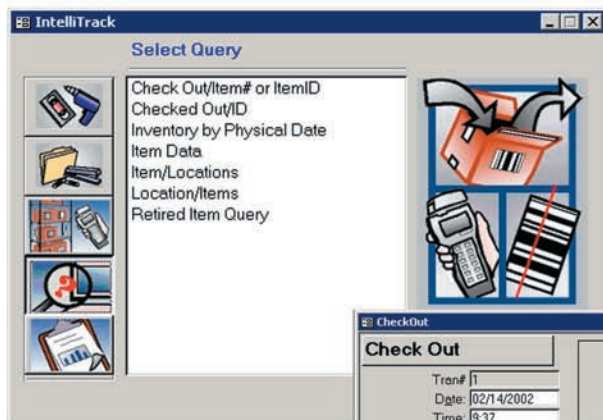
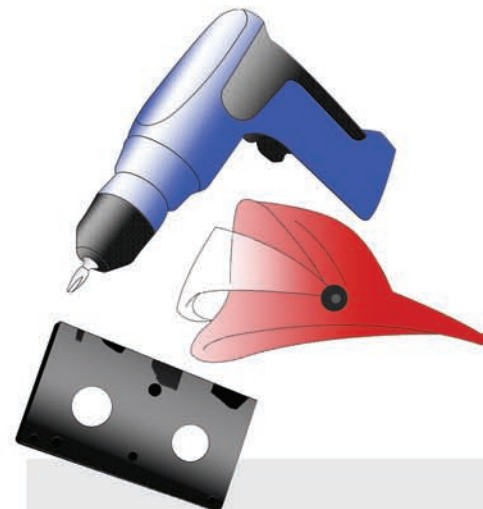
## Check In-Out

### Overview

The **IntelliTrack Check In-Out software** is designed to be used with portable or fixed station barcode readers to provide a complete turnkey solution to manage your inventory. Check In-Out functions are available to handle everything from routine physical inventories to managing a perpetual inventory and tracking items checked out to employees and/or customers. All IntelliTrack modules are written in Microsoft® Access XP and include the source code should you want to customize the Check In-Out system for your specific needs.

The IntelliTrack Check In-Out portable software enables the portable barcode reader to collect inventory data automatically. It provides for the collection and storage of user ID, both consumable and checkout items, locations, and quantities, all with the accuracy, speed, and simplicity of barcodes.

The IntelliTrack software includes a ready to run, PC compatible SQL Server database to manage all of your inventory data. IntelliTrack includes standard reports, queries, and barcode label printing capabilities.



Use Check In-Out's Query function to view data using standard queries. These queries present a non-editable listing of data.

Use the Check Out form to:

- Check out non-consumable items to an employee or customer.
- Issue consumable items to an employee or customer.
- Process checked out and consumable items on the same order, with a single form.
- Automatically update currently available stock and history data.

Item ID	Desc	Item#	Due Date	Due Time	Rental Co
EMR785	13" TV/VCR	EMRVT1922	02/15/2002	16:00	7/1-Day
1CAM7	Camcorder - SMM w/	1FSH-FVC10	02/15/2002	16:00	3/1-Day

### Check In-Out Program Requirements

#### Server

Processor  
- 1 GHz Minimum  
- 1.8 GHz recommended

#### RAM

- 256 MB Minimum  
- 512 MB or greater recommended

Available Hard Disk  
- 200 MB

#### Operating System

- Windows® 2000 SP4  
- Windows® Server 2003

#### Client Workstation

Processor  
- 800 MHz Minimum  
- 1 GHz recommended

#### RAM

- 256 MB Minimum  
- 512 MB or greater recommended

Available Hard Disk  
- 300 MB

#### Operating System

- Windows® XP SP1  
- Windows® 2000 SP4

For more information please contact your local reseller

or visit our website at [www.intellitrac.net](http://www.intellitrac.net).