



PERLE 594e

Network Controller

The only expandable Network Controller for AS/400 remote sites needing support for both IP and SNA-based users

- Fully IBM 5494 compatible
- TCP/IP networking gives SNA support without the high cost of setting up and maintaining a multi-protocol wide area network (WAN)
- Virtual Private Network (VPN) capabilities for secure, low cost networking over the Internet
- IP Routing Feature routes traffic from IP devices at remote sites onto the corporate WAN, eliminating the need for external routers or FRADs
- Fast Ethernet (10/100 Mbps) allows users to connect at 10 Mbps today and seamlessly migrate to 100 Mbps, without additional cost or administrative problems
- Multi-session/multi-host support provides convenient and cost-effective access to multiple hosts simultaneously from a Twinax terminal, with no APPN overhead
- Software Download feature allows for efficient distribution and maintenance of all upgrades from one central location
- Lifetime warranty for security and peace of mind

The Perle 594e Network Controller is the best choice to migrate remote AS/400 users from SNA to IP-networking. It supports 28 to 168 Twinax devices, multiple IP desktops (LAN or Twinax attached) and even dial-in users. This integrated platform is the ideal solution to extend your LAN resources over an IP backbone (including the Internet) to all your remote branch offices.

Migrating to a Single Protocol Network

The TCP/IP Host Connect feature of the Perle 594e uses MPTN (Multi-protocol Transport Networking) to convert SNA 5250 data streams into IP packets for transfer across an IP backbone. This is more efficient than IP tunneling and provides greater reliability and is easier to manage than DLSw (Data Link Switching). The Perle 594e allows AS/400 users to move to a single network protocol (IP) while retaining valuable Twinax devices at remote sites.

Leveraging VPN for AS/400 Branch Office Connectivity

The Perle 594e is the only solution that offers fully integrated Virtual Private Networking (VPN) support to give users the ability to securely connect AS/400 branch offices over the Internet. With IPSec (IP Security), DES encryption, IKE (Internet Key Exchange), as well as on-line statistics and monitoring support, the Perle 594e provides users with the tools they need to leverage the Internet for branch office connectivity.

Optional IP Routing Feature

With its optional integrated IP routing feature, the Perle 594e gives AS/400 users the ability to move IP traffic from IP-based devices across the corporate WAN, eliminating the need for routers or FRADs at remote sites.

IP over Twinax

The Perle 594e also supports IP over Twinax, protecting investment in Twinax cabling at remote sites. Twinax connected IP devices such as PCs (with IP over Twinax software) and Twinax attached NCs can access IP resources, such as e-mail, Notes and the Internet.

Full IBM 5494 Compatibility

The Perle 594e allows remote locations to benefit from all the advantages of IBM's 5494 technology, enhanced by a significant value-added feature set. Full 5494 functionality is supported, including Ethernet LAN connectivity, auto-configuration, remote management and enhanced user interface tools.

Access up to 40 AS/400 Hosts Simultaneously

The multi-session/multi-host configuration on the Perle 594e allows concurrent user sessions to be assigned directly from multiple AS/400 hosts to individual Twinax terminal users. This powerful feature can completely eliminate poor performance overhead associated with APPN-based solutions or the need to acquire shared addressing terminals.

Comprehensive Management

Perle's PC Utility program makes it easy to manage all the Perle 594 Network Controllers in your network from any PC located on the network using SNA or IP protocol. Software upgrades can be easily distributed using this utility.

NC Proxy Boot Server Component

The Perle 594e is the only network controller that provides an integrated Proxy Boot Server to deliver start-up applications to LAN or Twinax-based network computers connected to the Perle 594e. This avoids the need to download start-up applications over the corporate WAN or to install a separate boot server at each remote site.

Class Leading Service and Support

The Perle 594e is backed by the best service and support in the industry. All units come with Perle's Limited Lifetime Warranty for registered users. This includes free 7/24 hotline support for channel partners, plus a lifetime return to factory replacement guarantee.



Essential Network Connectivity

Optional Feature Cards

(up to a total of 6)

- 28-device Twinaxial
- 10 Mbps Ethernet (2 max.)
- 10/100 Mbps Fast Ethernet (2 max.)
- 8-device ASCII

Enhanced Networking Features

- Optional Integrated IP Routing
- Optional Integrated VPN

Host Interface

- V.35, EIA 232D (V.24/V.28), X.21, Ethernet

WAN Protocols

- SDLC, SNA Sub-area network, X.25, X.25 bis auto dial, X.21, Frame Relay, TCP/IP, PPP, IPSec, IKE
- PU Type 2.1 connection for AS/400 communication
- RU size up to 1,024 bytes

Dimensions

- 6.25"(H) x 17.25"(W) x 16.75"(D)
- 25lbs max

Operating Temperature

- 50°-85°F

Humidity

- 20-80%, non - condensing

Operating Voltage

- 100-125VAC, 50-60Hz, 1.5A
- 200-240VAC, 50-60Hz, .75A

BTU Output

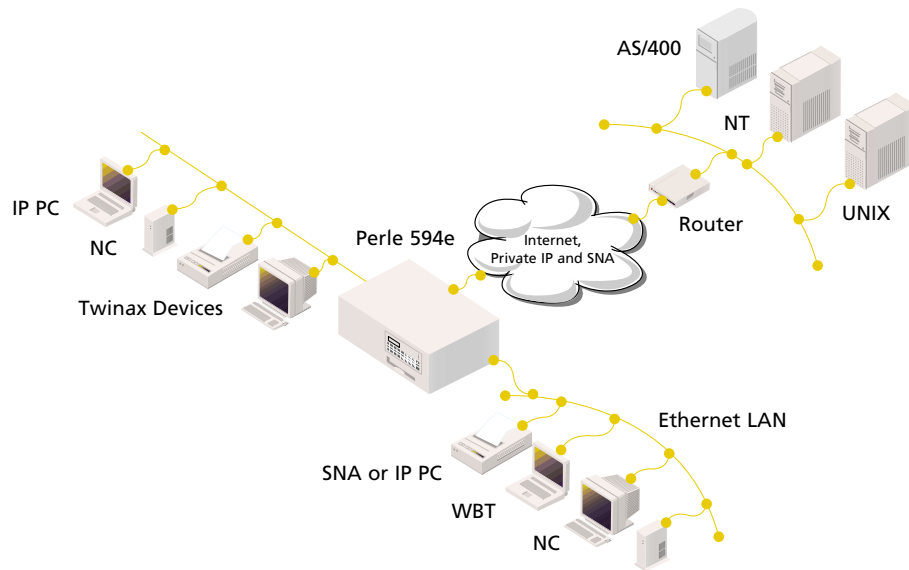
- 400/BTU hour max.

Memory

- 16 MB RAM max.

Front Panel

- 16 character backlit status display with 24-key keypad for system setup/status inquiry



Approvals

- FCC, UL listed, CSA, CE, DOC, TUV, BZT
- Fully compliant with IBM Information Network (IIN) and Advantis

Language Support

- English, French, Italian, German, Spanish, Japanese

Twinaxial Specifications

- Cable length - 5,000ft./1,235m. per port maximum

Workstations Supported

- All Twinaxial workstations, IBM PCs and compatibles supported by the IBM 5494
- IP over Twinax support (PC, NC etc.)

Sessions Supported

- With 6 Twinaxial feature cards, the Perle 594e supports up to 168 Twinaxial sessions. Up to 1,120 logical Twinaxial sessions available through multi-session/multi-host feature.

Ethernet Specifications

Ethernet LAN wiring supported:

- 10 BaseT unshielded twisted pair (10 and 10/100 Mbps)
- 10 Base2 thin Ethernet cable (10 Mbps)
- 10 Base5 thick Ethernet cable (10 Mbps)
- 100 BaseTX Cat.5-unshielded twisted pair (10/100 Mbps)

LAN Speed

- 10 or 10/100 Mbps

ASCII Specifications

- Eight EIA-232D (V.24/V.28) ports with a fan-out cable

Speed

- Asynchronous up to 115.2 Kbps

Warranty

- Limited lifetime warranty

Maintenance Agreement

Maintenance agreements are available for Perle hardware at nominal cost. These include on-site or express part

replacement in most areas for rapid system recovery.

Free Software

Perle provides free software upgrades to registered users, either via disk or Perle's Web site.

Ordering Information

Product Order Code and Model Description

PUS594E-28 594e base with 28-device Twinax

PUS594E-56 594e base with 56-device Twinax

PUS594E-0000 594e 28 devices with 10 Mbps Ethernet

PUS594E-0001 594e 28 devices with 10/100 Mbps Fast Ethernet

PUS594E-0002 594e 28 devices with 10 Mbps Ethernet and IP Routing

PUS594E-0003 594e 28 devices with 10/100 Mbps Fast Ethernet and IP Routing

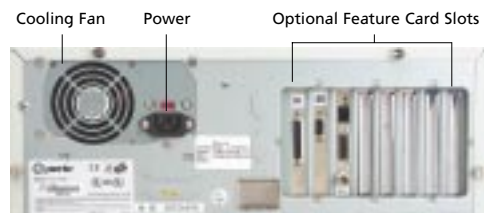
PUS594E-0004 594e 28 devices with 10 Mbps Ethernet and Enhanced Networking Features

PUS594E-0005 594e 28 devices with 10/100 Mbps Ethernet and Enhanced Networking Features

IBM 5494
Compatible

For more information, contact your Perle Authorized Reseller

Perle 594e Network Controller



Oak Brook, IL, USA
Tel: 630 288 4879 • Fax: 630 288 2651
700 Commerce Drive, 5th Floor
Oak Brook, IL, 60523

1 800 GO PERLE
www.perle.com

Nashville, TN, USA
Tel: 615 872 0770 • Fax: 615 872 0771
565 Marriott Drive, Suite 850
Nashville, TN, 37214